

E3/DS3/STS-1 To 4xFE Converter

Overview

The interface converter) using large scale FPGA design, E3/DS3/STS-1 interfaces and four 4x10/100Base-T Ethernet interface converter, 10/100Base-T channels will be transferred to the switch, HUB, routers, bridges, or other device. This device is a high performance, adaptive remote Ethernet bridge. Its small size, low cost, very suitable for cost-sensitive bridging applications or as a LAN extender or slicer bitstream on infrastructure. Can automatically learn continuously connected LAN MAC address on the destination address of the frame and another LAN forwarding. On the TCP/IP protocol transparent, provide security for the communication network between the different interface devices, seamless connectivity. This equipment is widely used between WAN and LAN networking, monitoring field.

Photo



Features

- Based on self -copyright IC ;
- Integrated Transmitter, Receiver, and Jitter Attenuator for DS3, E3, and STS-1;
- Have the function of E3/DS3/STS-1 interface loop back check, avoid the converter crashed because of interface loop return;
- E3 Interface Ethernet Bandwidth is 34.368Mbit/s,DS3 Interface Ethernet Bandwidth is 44.736Mbit/s,DS3 Interface Ethernet Bandwidth is 51.84Mbit/s
- 4Channel 10M/100M Ethernet interface can isolate each other to realize communication independently;
- Ethernet interface supports10M/100M, half/full duplex auto-Negotiation and AUTO-MDIX (crossed line and straightly connected line self-adaptable);
- Provide 2 clock types: E3/DS3/STS-1 master clock and E3/DS3/STS-1 line clock;
- Have 3 Loop Back Mode: E3/DS3/STS-1 interface Loop Back (ANA)、Ethernet interface Loop Back(DIG); E3/DS3/STS-1 interface Loop out (REM)

- Provide 75 Ω unbalance coaxial cable, B3ZS/HDB3 decoding, and loss-of-signal monitoring.
- **Have pseudo random code test function, easily line opened, can be used as a BER Tester**
- AC 220V, DC-48V, DC+24V, DC Power and DC-48V/DC24V power has polarity automatic detection function, you can install the device without differentiation between positive and negative polarity.

Parameters



Ethernet Interface

Interface Type:	10/100 Mbps, half/full duplex auto-negotiation
Interface Standard:	Compatible with IEEE 802.3, IEEE 802.1Q (VLAN)
MAC Address Capability:	4096
Connector:	RJ45, support Auto-MDIX



E3/DS3/STS-1 interface

Standard:	Conform to ITU-T G.703 G.751
Code rate:	E3(34.368Mbps \pm 20ppm) DS3(44.736Mbps \pm 20ppm) STS-1(51.84Mbps \pm 20ppm)
Code type:	B3ZS(DS3,STS-1)/HDB3(E3)
Impedence:	75 Ω (unbalance)
Connector:	BNC (unbalance)
Cable at Lengths:	75 Coaxial Cable Up to 380m (DS3), 440m (E3), or 360m (STS-1)



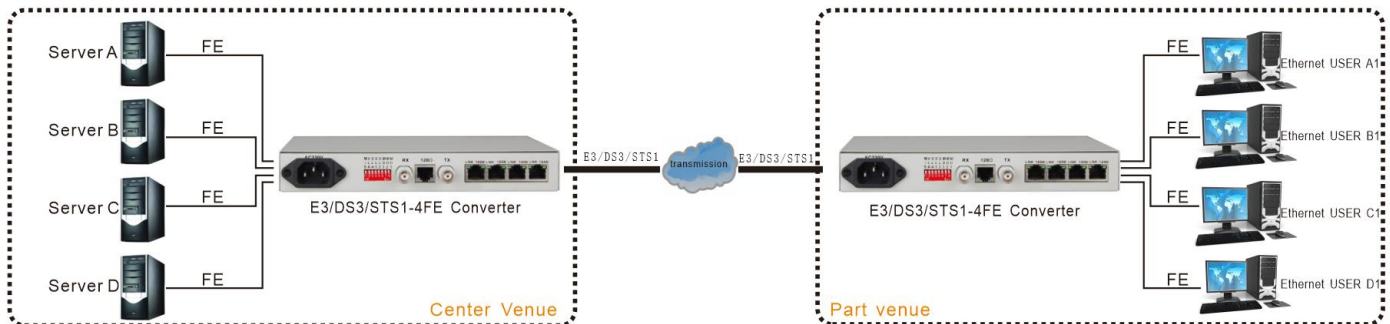
Working environment

Operating temperature:	-10 $^{\circ}$ C—+60 $^{\circ}$ C
Storage temperature:	-40 $^{\circ}$ C—+85 $^{\circ}$ C
Working humidity:	0%—95% (No condensation)
MTBF:	> 100,000 hour

Specifications

Product number	AT-ME3-ETH
Product Function Description	E3/DS3/STS-1 to 4*100Base-T Converter
Business port description	4 *10/100BASE-T ports; E3/DS3/STS-1 ports;
Power supply	AC220V / DC-48V /DC+24V (optional power supply)
Product Size	(L × W × H) 485* 140 * 45 mm 19 inch 1U rack (L × W × H) 216*140*31mm Desktop
weight	2.75KG/PCS 19 inch 1U rack , 0.75KG/PCS Desktop

Application



Anda Telecom Pvt. Ltd.

Registered office : E-38, Sec 06, Noida, Gautambudha Nagar, Uttar Pradesh - 201301, INDIA

Phone : +91 120 4109590, +91 93502 57173

E-mail : info@andatelecomindia.com

URL : www.andatelecom.com